



ASPIRE

— TO MOVE —



Clare Street, Bristol

Video and physical viewings available, two double bedroom flat located in the heart of Bristol city centre. Available part-furnished, from the 24th July

Cheltenham House is located on Clare Street in central Bristol. Local amenities can be found on Baldwin Street 50 metres away including banks, convenience stores, hairdressers and pubs. There is a bus stop on Baldwin Street 0.1 miles away.

£1,800 PCM

Clare Street, Bristol

- Two double bedrooms
- En-suite shower room
- Separate bathroom
- Central location
- Part furnished, no beds provided
- Open plan living
- Council Tax Band C
- Available 24th July 2026.
- Holding deposit: £415.00

Video and physical viewings available, two double bedroom flat located in the heart of Bristol city centre. Available part-furnished, from the 24th July 2026.

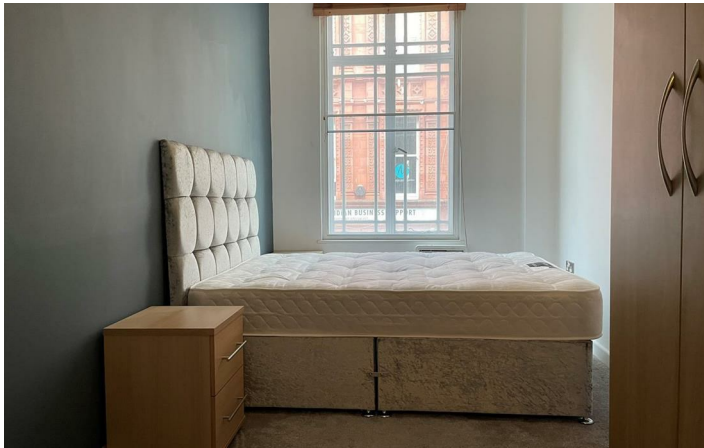
Cheltenham House is located on Clare Street is central Bristol. Local amenities can be found on Baldwin Street 50 metres away including banks, convenience stores, hairdressers and pubs. There is a bus stop on Baldwin Street 0.1 miles away.

The accommodation comprises of open plan kitchen, living, dining room with base and wall units, fridge with freezer compartment, cooker, hob, extractor and washing machine. Dining table and chairs as well as sofa and TV unit are included. There are two double bedrooms both of which have wardrobe storage and bedside tables, please note no beds are provided. Bedroom one benefits from an en-suite shower room. There is a separate bathroom with shower over bath, WC and sink.

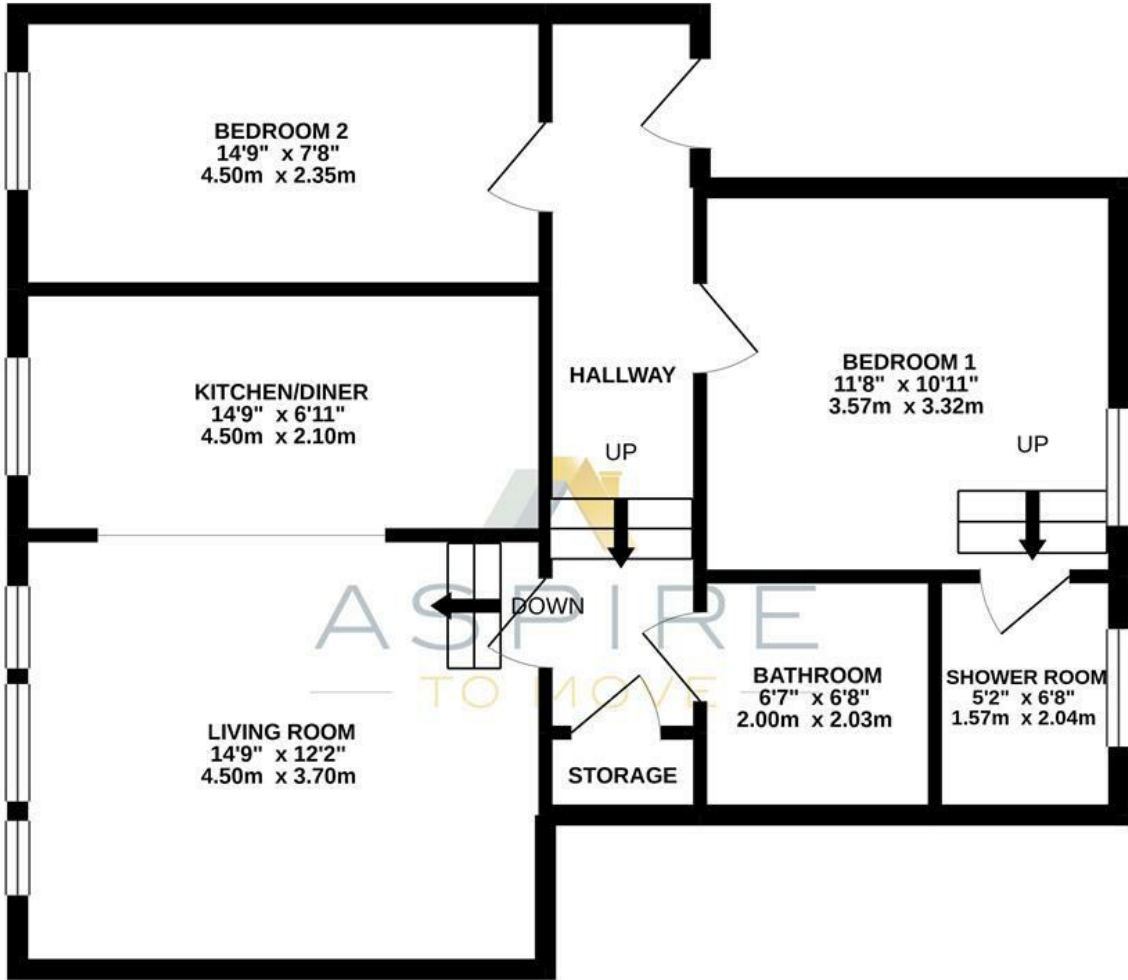
The property would best suit two professional sharers or a professional couple, students are also considered. Available from the 24th July.

Council tax band C, if applicable





FIRST FLOOR
697 sq.ft. (64.7 sq.m.) approx.



CHELTENHAM HOUSE, BRISTOL, BS1

TOTAL FLOOR AREA : 697 sq.ft. (64.7 sq.m.) approx.

Whilst every attempt has been made to ensure the accuracy of the floorplan contained here, measurements of doors, windows, rooms and any other items are approximate and no responsibility is taken for any error, omission or mis-statement. This plan is for illustrative purposes only and should be used as such by any prospective purchaser. The services, systems and appliances shown have not been tested and no guarantee as to their operability or efficiency can be given.
Made with Metropix ©2020

These particulars, whilst believed to be accurate are set out as a general outline only for guidance and do not constitute any part of an offer or contract. Intending purchasers should not rely on them as statements of representation of fact, but must satisfy themselves by inspection or otherwise as to their accuracy. No person in this firm's employment has the authority to make or give any representation or warranty in respect of the property.

